

# BizInt Smart Charts

## Drug Development Suite

VERSION

4

# Mini Guide

## Creating Pipeline Reports

### New in Version 4

- Support for **InfoDesk Pipeline Plus** (Native export for Pharmaprojects, R&D Focus, R&D Insight, Cortellis)
- Improvements to Excel export from Reference Rows.

**BizInt Smart Charts Drug Development Suite** helps you create, customize and distribute tabular reports from the leading drug pipeline databases.

**Drug Pipeline databases:** Data from **Pharmaprojects, R&D Focus, R&D Insight, Cortellis** and **Integrity** can be combined into a single report.

The **Generate Common Drug Names** tool automatically analyzes drug names and synonyms to help you identify related drug records.

You can distribute reports in several formats—including HTML, Word, PDF and Excel—with links back to records on the publisher platforms.

► For more info: [www.bizint.com/tips](http://www.bizint.com/tips)



### LOOK INSIDE

to see how you can...

- Import your search results 2
- View records, and images 3
- Combine charts 4
- Update charts 5
- Customize your chart 5-6
- Print reports 6
- Distribute reports via HTML, Word, Acrobat, and Excel 7
- Export to VantagePoint-BizInt Smart Charts Edition 8
- Send to Reference Rows 8

Spend a few minutes with this Mini Guide to understand the key features of BizInt Smart Charts Drug Development Suite.

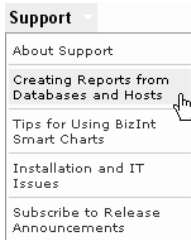
You can use the sample import file IDdbTAP.brd and chart files PP\_TAP04.cht, RDI\_TAP04.cht and IDdb\_TAP\_05Oct.cht located in the training folder to follow the steps in this MiniGuide.

## Creating your report

The first step to creating your BizInt Smart Charts report is to import the results of your drug pipeline search.

You can import search results and transcripts from many different sources into BizInt Smart Charts Drug Development Suite. Information about the currently supported databases and platforms can be found at **“Creating Reports from Databases and Hosts” on the Support section** of our website. Please review this information before exporting search results.

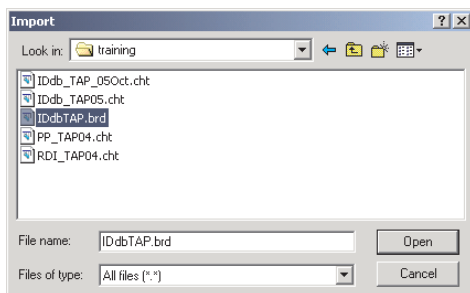
- Use **File | Import** (not **File | Open**) to import files into BizInt Smart Charts. Or, you can drag and drop your file into the BizInt Smart Charts window.
- Test your export format by displaying and importing just a few records.



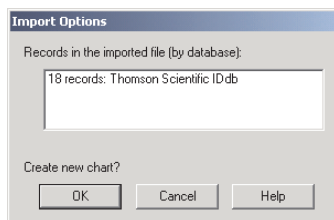
### Importing your search results

If BizInt Smart Charts is not automatically invoked when you export your search results, select **File | Import** from the menu bar.

From the Import window, find and select the transcript file that you want to use to create a chart. Use **File | Import**—not **File | Open**—to import search results.

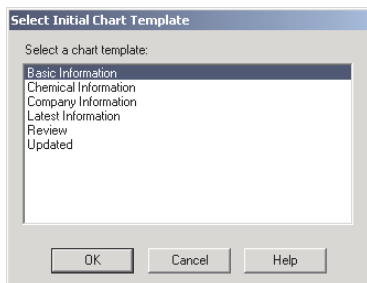


A panel will appear showing the number of records in the transcript. If you import a transcript containing records from multiple databases you will see the number of records in each supported database. Records from unsupported databases will not be included in the chart. When you create a chart from multiple databases it is treated as a combined chart (see page 4).



### Applying a chart template

After clicking OK you will be asked to select a chart template. Chart templates define the initial presentation of the report including visible columns. You can change this later, apply a different template, and even create your own templates (see page 6).



## Saving and titling your report

Use File | Save to save your report as a .cht file.

*Note: Export your report if you want to view it in other applications (see page 7).*

The initial chart title is based on the name of the file you imported. You can change the title by double-clicking on the title or using View | Title.

| Drug                      | Synonyms  | Company                        | Status   | Summary   | Structure |
|---------------------------|---|--------------------------------|----------|---|-----------|
| 1<br>apomorphine HCl, TAP | Apomorphine SL<br>lense<br>Uprina sublingual<br>TAK-251<br>Uprina<br>apomorphine<br>(sublingual), TAP<br>Apomorphine<br>apomorphine<br>hydrochloride  | Pentech<br>Pharmaceuticals Inc | Launched | Takeda has developed and launched a sublingual formulation of apomorphine (as lense), a dopamine D2 agonist, for the treatment of erectile dysfunction (ED). By June 2001, the product was available in France and Germany, following the EMEA approval of the drug in May 2001. At this time, Takeda was pushing forward with the launch strategy in each of the other European countries, and the product was later available in the UK [413000], [411376], [414866], [CONIT]                               |           |
| 2<br>asoprisnil           | mesoprogesterone<br>(endometrial)<br>Schering AG/TAP<br>Pharmaceutical<br>progesterone receptor<br>modulator<br>(endometrial),<br>Schering AG/TAP<br>PRM (uterine fibroids),<br>Schering AG/TAP<br>J-867<br>progesterone receptor<br>modulator (uterine<br>fibroids), Schering<br>AG/TAP<br>PRM (endometrial),<br>Schering AG/TAP<br>DE-09127 |                                | Clinical | Schering AG (formerly its subsidiary Jenapharm) and TAP Pharmaceuticals are developing asoprisnil (J-867), a progesterone receptor modulator and one of a series of mesoprogesterins, Schering AG (SP), for the potential oral treatment of uterine fibroids [202952], [318933], [491208]. Phase III trials for this indication were ongoing in February 2004, with EU submission expected in the fourth quarter of 2005 [526488], [526513]. The compound has also previously been developed for endometrial. |           |
| 3<br>cedfirotem pivoxil   | cedfirotem<br>Spectracel<br>CDTR-FI<br>ME-1208A   | Meiji Seika Kaisha Ltd         | Launched | Cedfirotem pivoxil is an oral cepem antibiotic from Meiji Seika that was first launched in Japan for the treatment of bacterial infections  |           |

## Viewing associated records and images

### Viewing Records

To view the record associated with a row, double-click on the row number button, or select the row and View | Records. You can use the arrow buttons or drop-down menu to move between records. Close the Record Viewer or select View | Chart to return to the chart.

For most databases you have the option to view the related record on the publisher website by selecting View | Record on Publisher Website.

### Viewing Images

Follow the same basic steps to view associated images, e.g., select View | Images or double-click on the image in the chart. Images will automatically scale to fit the window and you can use the drop down menu to zoom the image.

BizInt Smart Charts Drug Development Suite Version 4 is compatible with Windows 7, Windows 8, Windows Vista, Windows XP and Windows 2000.

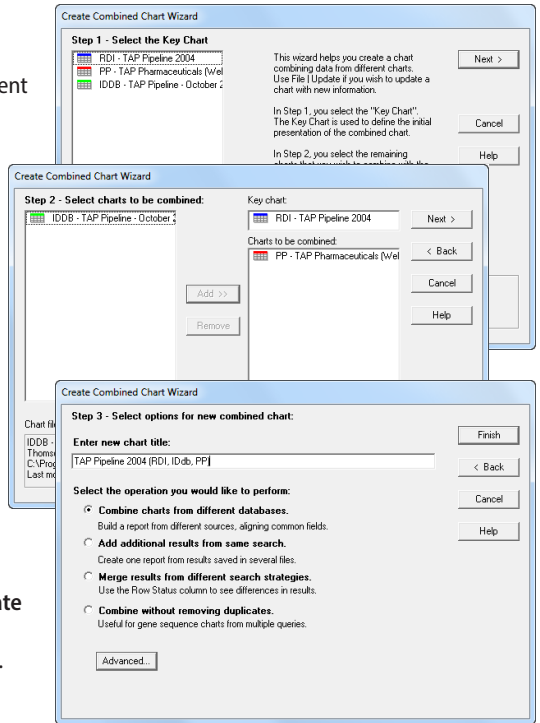
# Combining charts

Use **File | Combine** to combine charts from different databases and sources into a single chart.

In Step 1, choose the key chart from the list of all open chart files. In Step 2, choose the charts to combine with the key chart.

In Step 3, edit the new chart title and select your combine option. Select “Finish” to create your combined chart.

Each visible row in the original charts will appear in the combined chart; hidden rows will not be included. A Database column indicates the source of each record. Data in columns with similar content are placed into one column.



## Identifying Related Records

Under the **Tools** menu, you will find the **Generate Common Drug Names** tool, which helps you identify related records in your pipeline report.

The **Generate Common Drug Names** tool examines the drug names and synonyms in your drug pipeline report and creates a network of related products. A “Common Drug Name” column is created containing one of the drug names from each set of related records.

Use the **View | Sort** command on the **Common Drug Name** column, and check the “Alternate row shading when primary sort key changes” box to group related records together in your report.

Use **BizInt Smart Charts Reference Rows** to create a single row summarizing related records linked by **Common Drug Name** tool. (see page 8.)

| Drug                 | Common Drug Name  | Database                | Synonyms  | Company                        | Status                  |
|----------------------|-------------------|-------------------------|---|--------------------------------|-------------------------|
| A-198401             | A-198401          | Adis R&D                |   | Abbott Laboratories            | No Development Reported |
| A-84861              | A-84861           | Adis R&D                |   | Abbott Laboratories            | No Development Reported |
| A-84861              | A-84861           | FJBI Pharmaprojects     |   | Abbott (USA)                   | No Development Reported |
| TNP-470              | AGM-1470          | Thomson Scientific ICdb | AGM-1470<br>NSC-642942<br>AO-1470<br>AGM-1883<br>Sumaglit analog  | Takeda Chemical Industries Ltd | No Development Reported |
| AGM-1470             | AGM-1470          | FJBI Pharmaprojects     | TNP-470   | Takeda (Japan)                 | No Development Reported |
| AGM 1470             | AGM-1470          | Adis R&D                | TNP 470   | Takeda                         | Discontinued II         |
| Apomorphine - TAP    | Apomorphine - TAP | Adis R&D                | Apomorphine hydrochloride - TAP Holdings<br>Isera®<br>Sipoflone<br>TAK 251<br>Uptima<br>Isera®®<br>Uptima®® | Pentech Pharmaceuticals        | Launched                |
| apomorphine HCL, TAP | Apomorphine - TAP | Thomson Scientific ICdb | Apomorphine SL Isera  | Pentech Pharmaceuticals Inc    | Launched                |

## Updating charts

Use **File | Update** to update reports with new information. In Step 1, you select the “older” chart to be updated; in Step 2, select the chart with new information.

A Row Status column appears in the updated chart and updated cells are highlighted in blue.

For more information, see “Combining & Updating Reports” at: [www.bizint.com/Tips](http://www.bizint.com/Tips).

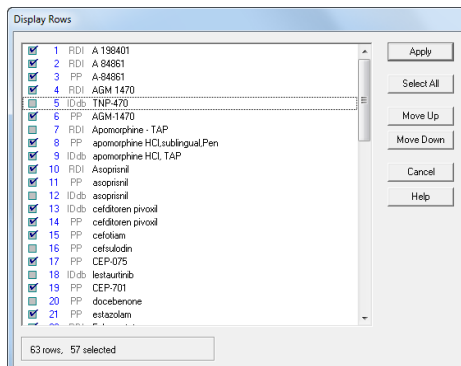
| Thomson Scientific IDdb: IDdb TAP Pipeline 2004 updated 2005 |            |   |                                |                  |  |  |
|--|------------|---|--------------------------------|------------------|--|--|
| Drug   | Row Status | Synonyms  | Company                        | Status           | Indication   |  |
| 1  | Added      | lansoprazole<br>lansoprazole (oral controlled-release, Micropump),<br>TakedaTAPP/Amel<br>TAI-380MR<br>lansoprazole (oral controlled-release, Micropump),<br>TAPP/Amel | Takeda Pharmaceutical Co Ltd   | Phase 3 Clinical | Gastroesophageal reflux<br>Gastrointestinal disease<br>Stomach ulcer<br>Duodenal ulcer   |  |
| 2  | Added      | laprazole<br>FR-81149<br>FR-1148<br>Alderon   | li-Yang Pharm Ind Co Ltd       | Phase 2 Clinical | Peptic ulcer   |  |
| 3  | Updated    | CEP-701<br>SPK-824<br>lestaurinib   | Cephalon Inc                   | Phase 2 Clinical | Myeloid leukemia<br>Pancreas tumor<br>Prostate tumor<br>Cancer<br>Solid tumor  |  |
| 4  | Updated    | FR-229934<br>FR-229934B   | Fujisawa Pharmaceutical Co Ltd | Discontinued     | Erectile dysfunction   |  |
| 5  | Updated    | A-95006<br>AG-1749<br>Agoston<br>lisatec<br>lansoprazole<br>Lancor<br>Opastro<br>Pineacid<br>prole  | Takeda Pharmaceutical Co Ltd   | Launched         | Gastroesophageal reflux<br>Gastritis<br>Helicobacter pylori infection<br>Peptic ulcer<br>Ulcer<br>Dyspepsia<br>Helicobacter infection<br>Stomach ulcer |  |

## Customizing your report

### Hiding and Moving Rows

To hide rows, use **Edit | Hide Rows** or de-select the rows on the **View | Rows** panel. You can select a range of rows and use **Ctrl-H** as a shortcut to hide the rows. Hidden rows will not appear in exported or printed reports.

Use **Edit | Move Row** to move rows within the chart or rearrange rows on the **View | Rows** panel.



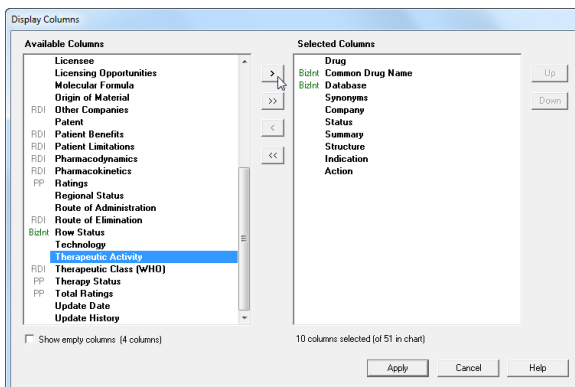
### Changing Columns

To select and rearrange columns, select **View | Columns**. On the left side, you will see all the columns in your chart. Add the columns you wish to display to the “Selected Columns” panel at right. Drag the column name or use the Up/Down buttons to rearrange the order of the columns.

### Adding User Columns

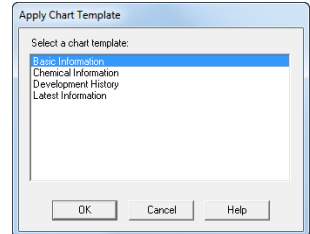
To add your own column, select **Edit | Add Column**. A new untitled column appears on the right side of the chart. Double-click on the column title to change the title.

You can change properties of columns using **View | Column Properties**.



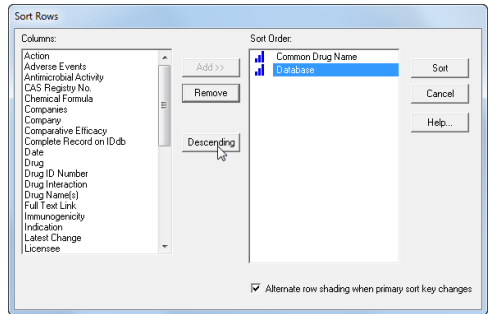
## Creating and Applying Chart Templates

You can create your own chart template by creating a chart you like, then saving this template using **File | Save as Template**. To apply a new chart template, select **View | Apply Template**. Chart templates apply to either single database charts or to combined (multi-database) charts.



## Sorting Rows

To sort the rows, select **View | Sort**. You can sort on multiple columns, in ascending or descending order. Use the check box to control row shading.



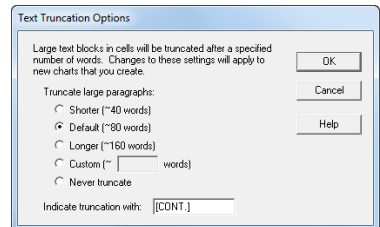
## Editing and Highlighting Text

You can edit text in any cell, including subcells. To apply a yellow highlight to cells or rows, use **Text | Highlight Cells** or **Text | Highlight Rows**. Turn highlighting on and off using **View | Enable Highlights**.

You cannot apply a style (e.g. bold, italics, color) to *individual words or phrases* in the chart or records.

## Changing Text Truncation

BizInt Smart Charts automatically truncates large text blocks, as indicated by [CONT.] You can change the text truncation behavior using **Options | Text Truncation** in cells.



## Creating Simple Statistics

To create a count of unique values in a column, select **Tools | Statistics** and select a column (must be visible.) Statistics will be saved in a .csv file for further processing in Excel.

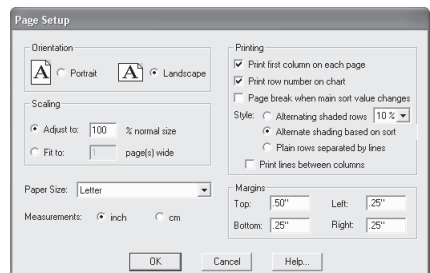
|   | A                       | B     |
|---|-------------------------|-------|
| 1 | Status                  | Count |
| 2 | Discontinued            | 3     |
| 3 | Discovery               | 2     |
| 4 | Launched                | 4     |
| 5 | No Development Reported | 5     |
| 6 | Phase 2 Clinical        | 2     |
| 7 | Phase 3 Clinical        | 1     |
| 8 | Pre-registration        | 1     |

## Printing reports

You can change the print settings under **File | Page Setup**. Under scaling, you can specify that the chart fits on a specified number of pages in width.

Use **File | Print** to print the chart, records, and images. You can print the current record, all records, or a range of records.

Use **File | Print Preview** to preview the appearance of a printed chart.

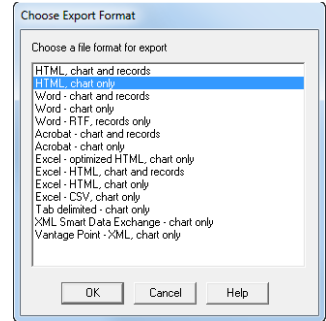


## Distributing reports

To distribute your report, use **File | Export** and choose the appropriate Export Format. Detailed information on export formats is available at: [www.bizint.com/Tips – “Distributing Reports”](http://www.bizint.com/Tips - \)

### Recommended Export Formats

- **HTML** (chart and records, chart only): creates an HTML file which can be viewed in a browser.
- **Word** (chart and records, chart only): creates an HTML file with the chart (and optionally the records and images) which is opened in Microsoft Word. This format is good for reports which will be distributed by email. You can also export the records only as an RTF file.
- **Acrobat** (chart and records, chart only): creates an HTML file which is opened in Adobe Acrobat and can be saved as a PDF. This format is ideal for reports containing images and for printing.
- **Excel - optimized HTML** (chart only): creates an HTML file which preserves most formatting while creating only one row in Excel for each BizInt Smart Charts row. You can also export in .CSV format for analysis in Excel.



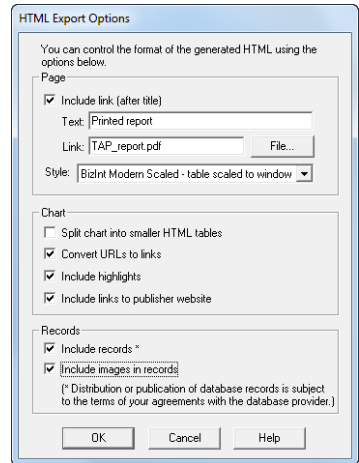
### HTML Export Options

You can specify the appearance of your exported HTML using the HTML Export Options panel.

Under “Style”, you can select a stylesheet. The “BizInt Modern Scaled” stylesheet will attempt to scale your report to fit the width of the browser window.

One option under “Chart” is to include a link to the full record on the publisher website; “Link” will appear under the row number in the exported HTML.

Under “Records” you can choose to include the records (which will be linked to the record title) and images in the records.



## Distributing reports with images

We recommend that you use the Word or Acrobat export formats to deliver reports with images, since the images in HTML exports are in a directory of linked .jpg files.

**To embed images in your Word file**, go to **Edit | Links...** (In Word 2007, **Prepare | Edit Links to Files** or **Alt-E-K**). Select all the links in the list, check the “Save picture in document” box at the bottom, click **OK** and save as a .doc file.

## VantagePoint – Smart Charts Edition

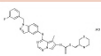
VantagePoint - Smart Charts Edition (VP-SCE) is a customized version of VantagePoint designed for use with BizInt Smart Charts. It provides tools for data cleanup, filtering and visualization.

Use **Export | VantagePoint - XML (chart only)** to send visible columns to VP-SCE for further processing. Cleaned up and filtered data can then be returned to BizInt Smart Charts Drug Development Suite as new columns.

For more information, see: [www.bizint.com/vpsce](http://www.bizint.com/vpsce) or [www.bizint.com/Cookbook](http://www.bizint.com/Cookbook)

## BizInt Smart Charts Reference Rows™

BizInt Smart Charts Reference Rows offers the ability to create a “reference row”— a single row combining information from different sources. Related source records representing the same drug – based on the same Common Drug Name – are presented in a single row.

| HER2 inhibitors - R&D Insight, Pharmaprojects, R&D Focus, Thomson Pharma, Integrity |                                   |                         |               |   |   |   |
|---|-----------------------------------|-------------------------|---------------|---|---|---|
| Drug  | Database                          | Originator              | Highest Phase | Mechanism Of Action   | Structure   | Commercial Introduction   |
| 1. BMS 599626   | 1.1 Adis   <a href="#">link</a>   | Bristol-Myers Squibb Co | Phase I       | HER4 (erbB4) Inhibitors<br>EGFR (HER1<br>erbB1) Inhibitors<br>HER2 (erbB2) Inhibitors |  | Bristol-Myers Squibb and Ambit Biosciences Corporation are co-developing BMS 599626 for the treatment of cancer. The orally administered, pyrrolotriazine compound is a dual inhibitor of both epidermal growth factor receptor (EGFR/erbB1/HER1) and HER2 (ErbB2/neu) protein tyrosine kinases. EGFR and HER2 have been found to be frequently overexpressed in a variety of tumour types. [CONT.] |
|   | 1.2 IMS                           |                         |               |   |   |   |
|   | 1.3 PProj                         |                         |               |   |   |   |
|   | 1.4 PProj                         |                         |               |   |   |   |
|   | 1.5 TPharm   <a href="#">link</a> |                         |               |   |   |   |
|   | 1.6 Integr   <a href="#">link</a> |                         |               |   |   |   |

BizInt Smart Charts Reference Rows is a separate utility included with BizInt Smart Charts Drug Development Suite. Use **File | Send to Reference Rows** to open your report in BizInt Smart Charts Reference Rows.

For more information on using Reference Rows, see the BizInt Smart Charts Reference Rows Mini Guide or go to [www.bizint.com/tips](http://www.bizint.com/tips)

### QUESTIONS OR SUGGESTIONS?

Please contact us at:

✉ [support@bizcharts.com](mailto:support@bizcharts.com)

☎ 1.714.289.1000 (8 am - 5 pm Pacific Time)

🌐 [www.bizint.com](http://www.bizint.com)

We are always pleased to hear from you and will do our best to address your issues.



Software for  
Business Intelligence

**BizInt Smart Charts**

**BizInt Solutions, Inc.**

1.714.289.1000

[www.bizint.com](http://www.bizint.com)